



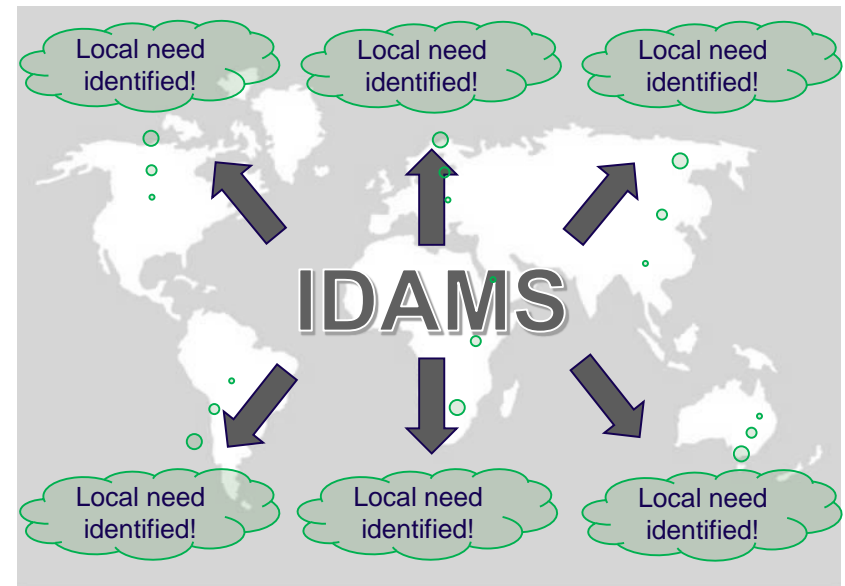
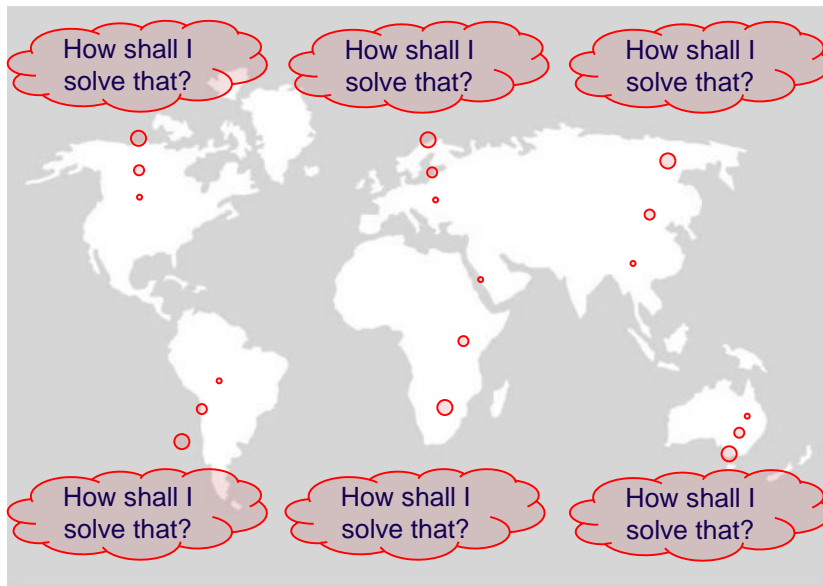
International Distribution Asset Management Study (IDAMS)

IDAMS – Community: Global Challenges → Global Learning → Local Action

The outside-in perspective of your continuous improvement process (ISO55001)

February 2020

IDAMS: Embracing global DSO industries to master global challenges

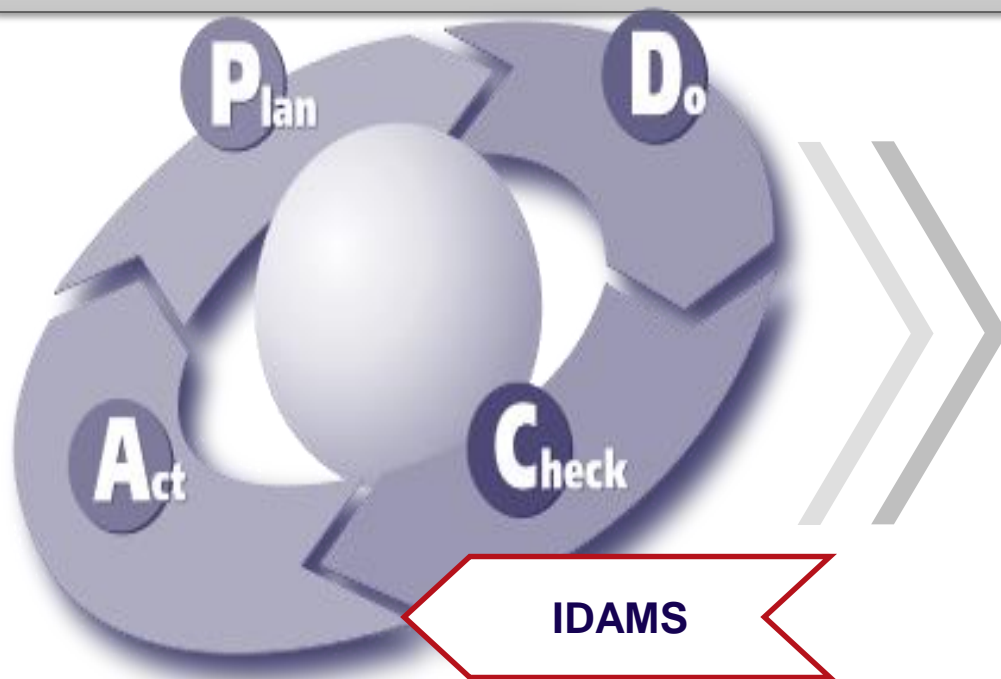


- Applied infrastructure strategies / methodologies suitable for the growing challenges?
- IDAMS has been inspiring local improvement of infrastructure management for eight years now.
- IDAMS – Community provides learning by facilitating yearly peer group studies with altering topics
- IDAMS – Community is created to deliver 3 times the value of other programs deliver at a 60% higher value/money rate
- To achieve that we bring the global front-runners together in the IDAMS – Community.

We are pleased to invite you to join

Outside-In Perspective for CIP*) according to ISO 55001

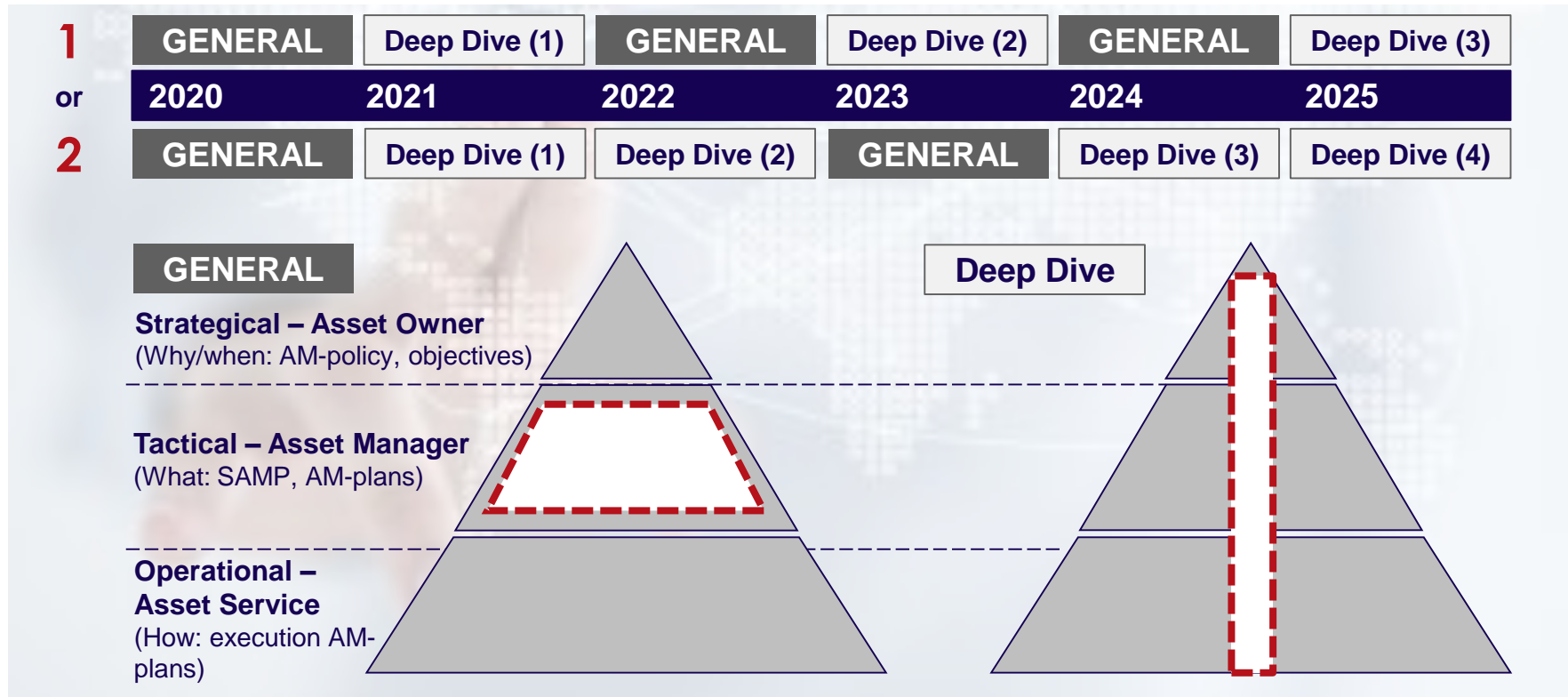
Learn from the best...



... be the best

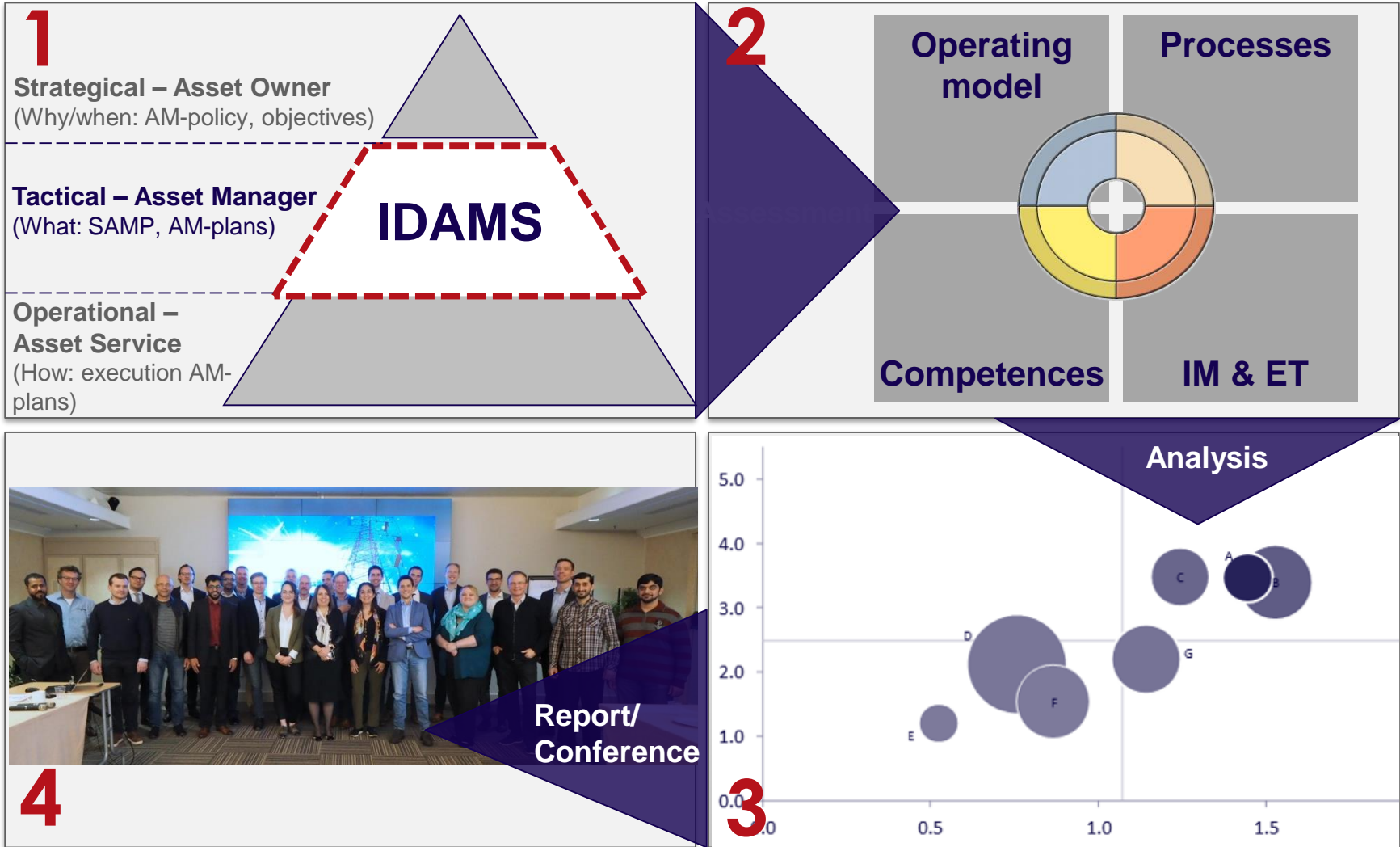
IDAMS provides DSO with Optimization Roadmaps for Infrastructure Management

GENERAL: Entire tactical AM value chain high level
Deep Dive: One AM topic (e.g. SAMP) in detail

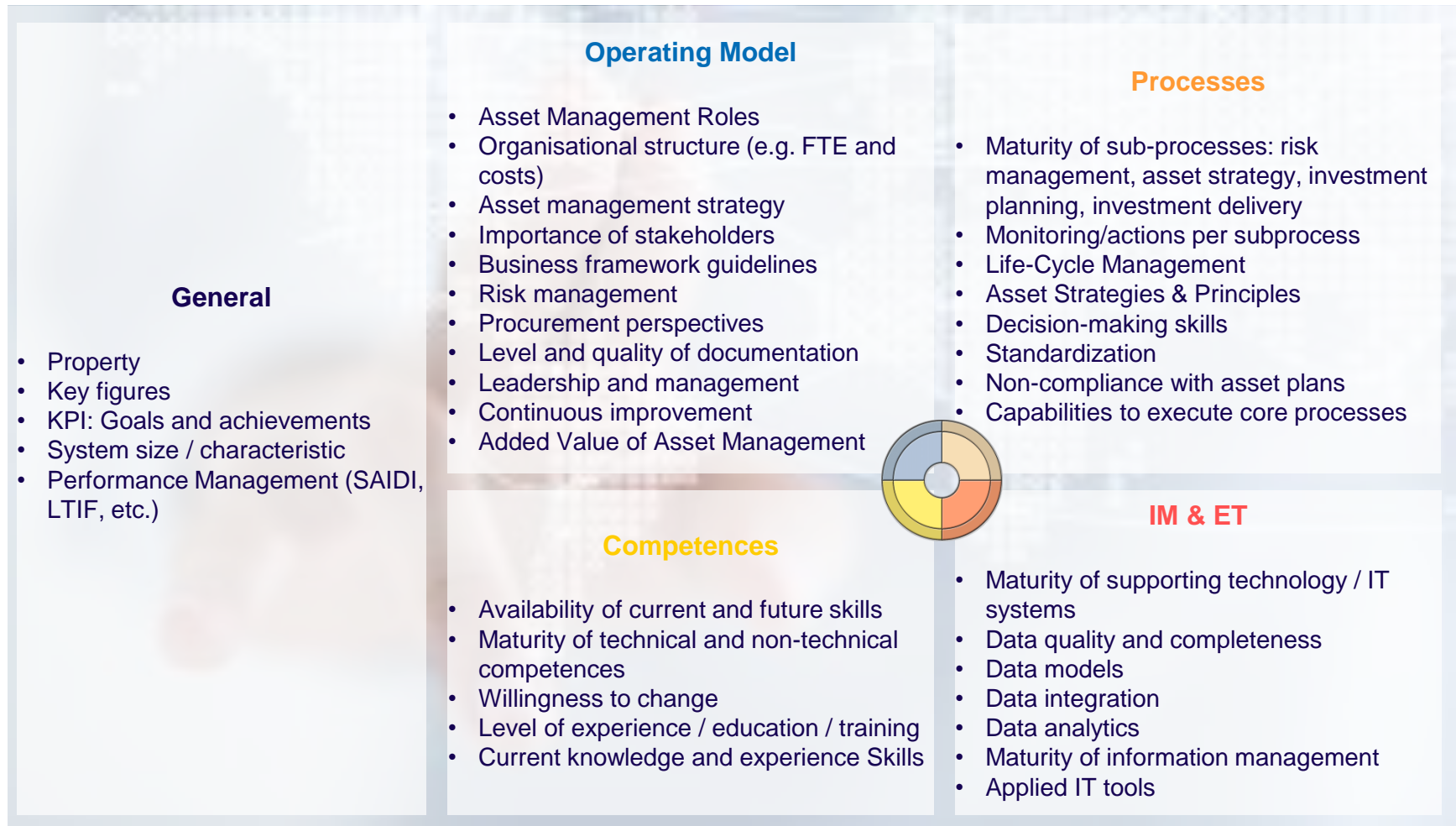


General and Deep Dive are peer group studies seeking best practices
Concept of annually altering topics and continuous learning generates 3x the value of bi-annual cycle programs and a 60% higher value/money rate

Assetmanagement: Assessment; Report; Networking

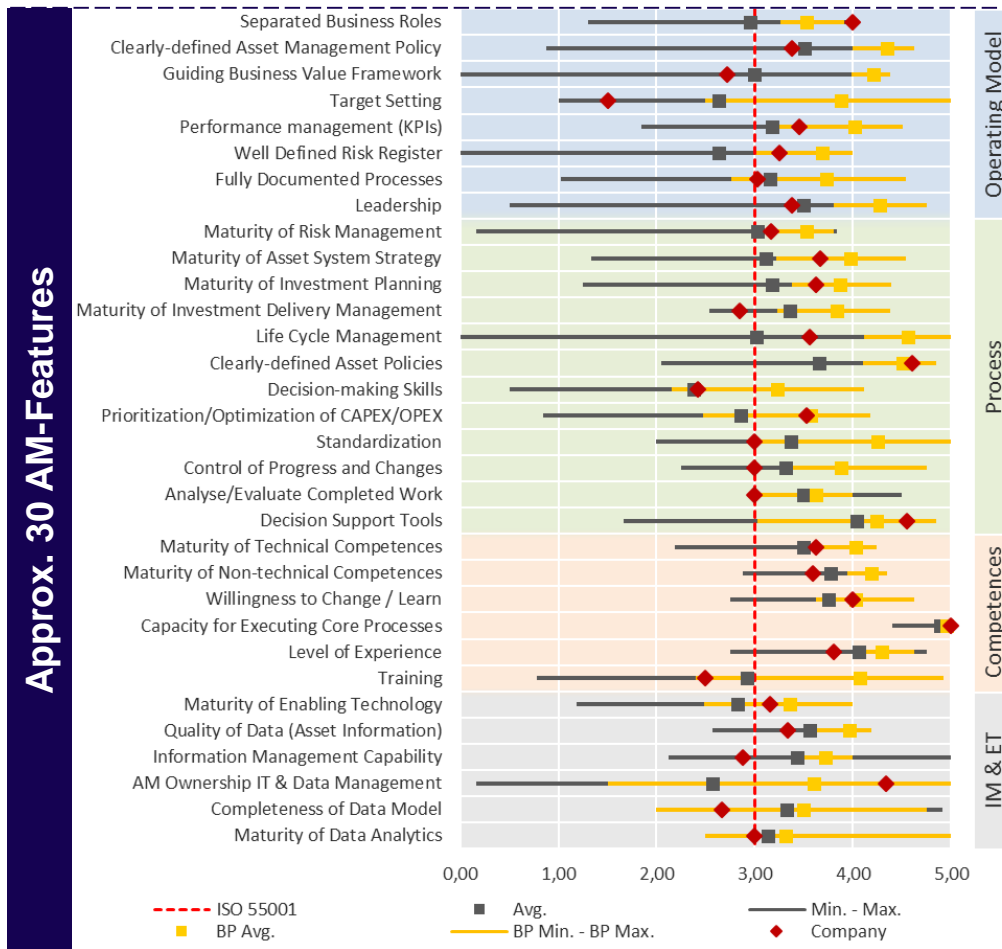


Assessment: Onsite-Workshop → Questionnaire → Data Collection / -Validation

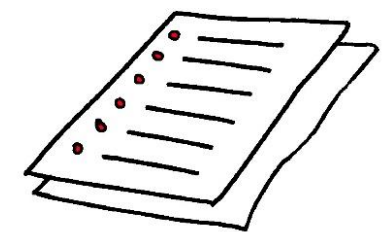


What are the values used to compare the peers / identify best practices?

Report: approx. 30 AM features → Comparative Analytics - TOP/LOW 10 Features - Report



TOP 10 / Low 10



- 1
Executive Summary
 Assess asset management by strengths, development fields, and recommendations
- 2
Analysis
 Detailed analyses with data & facts to support the abnormalities
- 3
Peer-to-Peer
 Results- or leading practice conference: to share knowledge and address opportunities and improvement initiatives

Voices on the study & the conference

alliander **e-on** **HELEN SÄHKÖVERKKO**

NETZOÖ Ein Unternehmen der Energie AG **TORONTO HYDRO** **WESTNETZ**

MITNETZ STROM **STEDIN.NET** **ENEXIS**

Stromnetz Hamburg **Stromnetz Berlin**

Regionetz Ein Unternehmen von **STAWAG** **EWW** **distribuição**

Learned / Insights

- Confirmation of the current own direction
- Peers face similar challenges
- Insight into practices of the best
- Inspiration for your own improvement map

Conference Program

- Excellent content of the program
- Balanced mix of peers' practices and views of UMS
- Strong link between study and conference topics

Conference

- It was great – esp. networking
- It was inspiring
- Very open atmosphere
- Great learning experience

Continuous Learning – Interaction – Data – Reference

Qualities	Characteristics
Continuous Learning	<ul style="list-style-type: none"> • Frequent repetition of IDAMS – General mixed with altering topics of IDAMS – Deep Dives boost valuable insights • A globally growing community of front runners leverage to varying perspectives
Interaction	<ul style="list-style-type: none"> • As members of the IDAMS – Community there are lots off opportunities to interact • Conferences, Conference Calls, Workshops, Interviews, Presentations • Peer Group Studies are the start; IDAMS – Community aims to be daily advisor
Data	<ul style="list-style-type: none"> • Openness and willingness to share practices is core for IDAMS Community • Comparability of members requires common understanding of collected data → Studies start with 2-day onsite data collection workshop
Reference	<ul style="list-style-type: none"> • Questionnaires follow the structure of AM-Standard ISO 55001 • Maturities are determined by using the IAM Maturity Scale • Recommendations are referenced at best practice infrastructure management

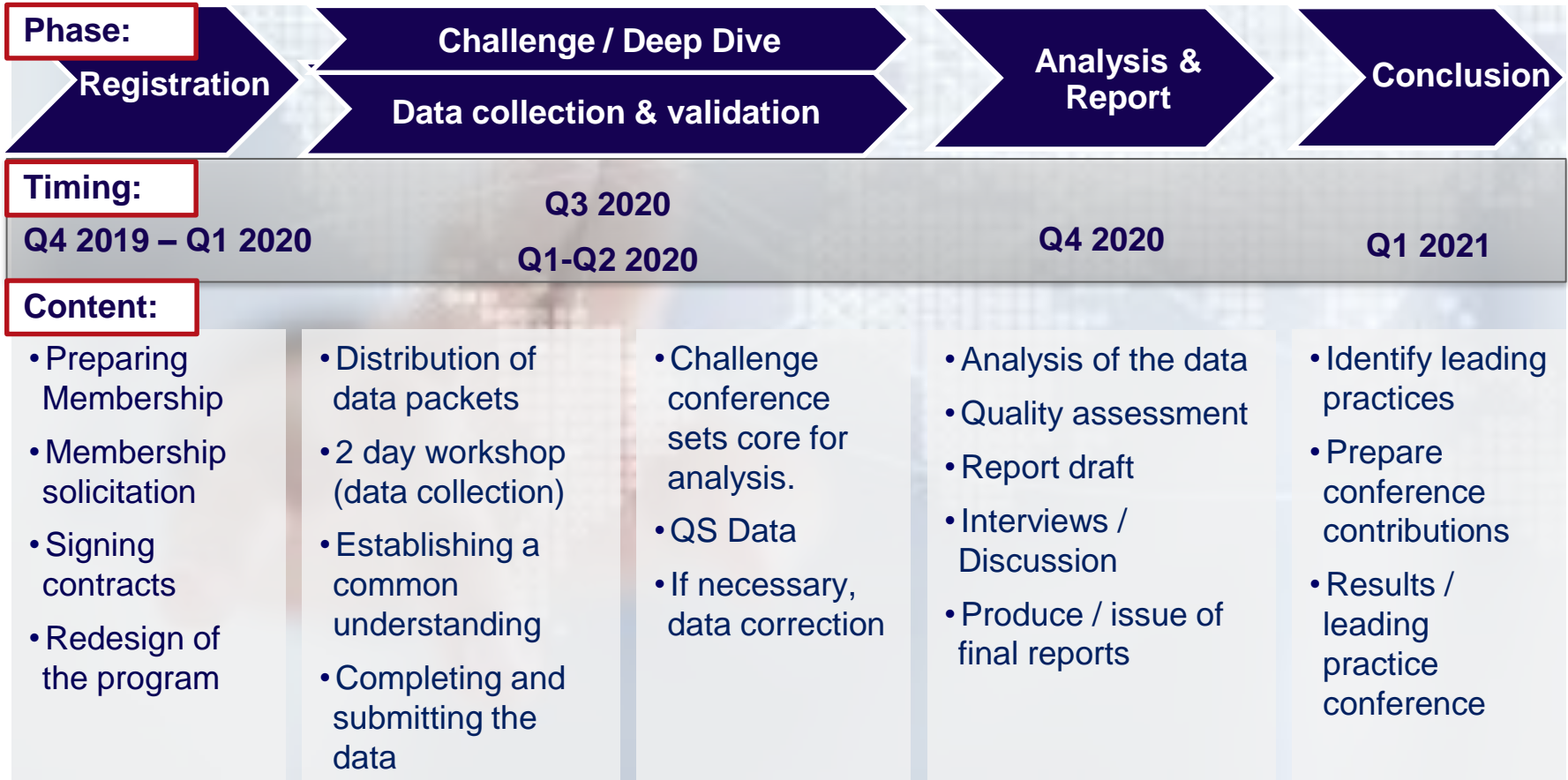
IDAMS – Community and its Core Values

Continuity
Dynamics

in referencing standards and applying analytic models

in altering topics and varying perspectives of a growing community

Timeframe IDAMS – General 2020



Effort Diagram



Membership

Membership	Note	Price/a
Annual Fee	Covering one of (1) IDAMS – General study; (2) IDAMS – Deep Dive study or (3) IDAMS – Off-Cycle study plus (4) additional new Community offerings (a) New Member (Company in its first community year if never joined a UMS Group GLC) (b) Member (each member not covered by New Member)	 32.000,00 € 25.000,00 €
Annual Expenses lump sum	Expenses incurred by UMS Group for travel and the organization of orientation meetings, 2-day data collection workshops, Best practice interviews, results conferences, Results presentations to members, and marketing measures to grow the community	7.000,00 €
Prices for special services	Benefits not covered by membership.	on request

In our vision the IDAMS – Community will be growing both in terms of members as well as in terms of offering being beneficial to its members. Both requires UMS Group’s and Members’ commitment for a longer period. Therefore, the initial agreement period is two years with automatic yearly prolongation until effectively terminated.

Annual membership fees as well as its structure are subject to change. Changed cost structure on the one hand as well as further services being added to the IDAMS – Community on the other hand may justify changes in Annual membership fees or its structure. After prior notice the changed fee becomes effective with the prolongation of the Agreement.

The agreement may be terminated by either party with written notice. A period of notice shall apply of three months prior to the period ending. In case of no or late notice the agreement is prolonged for another year. The prolongation continues on a yearly basis until a termination becomes effective.

Apply now for a membership in the IDAMS – Community

FAQ

Question	Answer
What makes it useful to compare DSO with different e.g. regulatory conditions?	The DSO still have a comparable process landscape. The different boundary conditions allow different perspectives on the same process → “I have never seen it from that angle” effect leads to new inspirations for the continuous improvement of each members infrastructure management.
Why a community?	The feedback shows that networking and discussing current topics at the final conference is most beneficial for each member. Through the community idea, we want to break the rigid 2-year cycle and turn IDAMS into a continuous learning process, which is successively enriched by additional services.
Is IDAMS a benchmarking program?	No, it is a learning community making use of benchmarking and assessment methodologies to determine the learning fields. The comparison of members serves to identify strengths and development fields (individually or in general) and to use this for the continuous improvement process.
We are not ISO55001 certified. Is IDAMS suitable for us?	A certified AM management system is not a requirement for membership in the IDAMS – Community.
How can we benefit from the IDAMS results?	There are different ways members use the IDAMS results. The most advantageous way is to derive and implement CIP measures to increase the effectiveness/efficiency of company’s infrastructure management.
What is the expected effort of data collection?	50% of the data will already be captured during the 2-day onsite data collection workshop. The remaining 50% of the data should be collectable within a few days as well. We recommend one person for data collection management (e.g. a new hire; Training-on-the-job) plus relevant subject matter experts where needed.

UMS *group*

Mike Mischkalla-Schoen
Director
Program Manager IDAMS

UMS Group Europe B.V.

*Postfach 40 01 10
45076 Essen
Germany*

*Mobile: +49-172-972 34 24
Office: +49-201-6472-9938*

*mmischkalla-schoen
@umsgroup.com
www.umsgroup.com*

UMS *group*

Ed de Vroedt
Managing Director a.i. Europe

*UMS Group Europe B.V.
Amstel Business Park
Joop Geesinkweg 901-999
P.O. Box 94013
1090 GA Amsterdam
The Netherlands*

*Mobile: +31-61-026-6162
Office: +31-20-561-7033
Fax: +31-20-561-6666*

*edevroedt@umsgroup.com
www.umsgroup.com*